

Fast Idle Upgrade for 2008 6.0L RPO LY6 Gas C/K 2500-3500



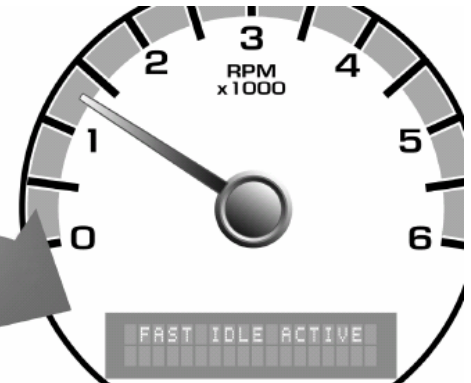
Fast Idle is controlled using the Cruise Control buttons located on the left-hand side of the steering wheel.

These conditions must be met for Fast Idle to work:

1. Park Brake must be set!!
2. Transmission/PRNDL must be in Park (P) or Neutral (N).
3. The Brake must not be pressed.
4. Vehicle Speed must be zero.



The DIC will display "FAST IDLE ACTIVE" when Fast Idle is engaged.



Enable Fast Idle by pressing and releasing the Cruise Control "ON" switch, the LED indicator on the switch will illuminate.

Preset Fast Idle by pressing and releasing the Cruise Control "SET" switch to achieve the preset 1200 RPM. This is not adjustable by a Tech2 scanner.

Variable Fast Idle is set by depressing and holding the accelerator at the desired RPM, then by pressing and releasing the Cruise "SET" switch to establish the desired Fast Idle speed.

The Variable Fast Idle speed can be observed on the tachometer. This 'variable RPM value' is not remembered at key off, so you'll have to set it back where you want it with the above instructions.

Disable (turn off) Fast Idle.

Any of these conditions will cancel Fast Idle:

1. Turn Cruise Off. Press and Release the Cruise Control "ON/OFF" switch.
The LED indicator should turn off.
2. Press and Release the Cruise Control "SET" switch
3. Press the brake pedal.
4. Press and Release the Cruise Control "CANCEL" switch.
5. Release the Park Brake.
6. Move the Transmission Shift Lever (PRNDL) from Park (P) or Neutral (N).



www.ecmprogrammer.com